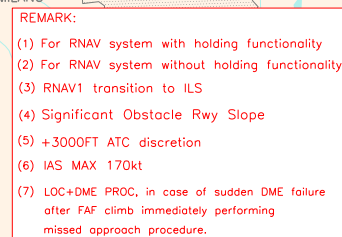



MILANO/MALPENSA
ILS or LOC-Z RWY 35R

REMARK: Missed approach obstacle clearance is provided by 2.5% gradient; 5% gradient until 3000 ft is required to overfly Vergiate and Veneqono ATZ. Pilots unable to comply with this gradient are advised that will fly within airspace classified "G".

OCA (OCH)		A	B	C	D	<div>CIRCLING SECTORS</div> <div></div>	FT PER MIN	GS	FAP-OM 2.80 NM	OM-MM 3.73 NM	MLP DME	ALT (HGT)	MNM SECT ALT 25NM FROM ARP or VOR/DME	
STRAIGHT APPROACH	CAT. I (4)	845 (154)	855 (164)	870 (179)	880 (189)		850	160	1 : 03	1 : 23			MMP	
	CAT. II (4)	754 (63)	767 (76)	778 (87)	796 (105)		740	140	1 : 12	1 : 35			D 7	2924 (2233)
	LOC+DME (7)	1140 (449)					635	120	1 : 24	1 : 51			D 6	2605 (1914)
	CIRCLING	1450 (682)		1650 (882)	1710 (942)		530	100	1 : 41	2 : 13			D 4	1970 (1279)
						425	80	2 : 06	2 : 46	D 2	1335 (644)	(10) 10300 in case of MMF (10) 10300 in case of MMF (10) 10300 in case of MMF		

TABULAR DESCRIPTION

ILS Z RWY35R – RNAV TRANSITION TO ILS APPROACH

Serial Number	Path Terminator	Waypoint Identifier	Fly Over	Course °M(°T)	Magnetic Variation	Distance (NM)	Turn Direction	Altitude (ft)	Speed Limit (kt)	VPA/ TCH	Navigation Specification
010	IF	INLER	-	-	-	-	-	+4000 (1)	AT 190	-	RNAV 1
020	TF	TODKU	-	349 (351.9)	-	4.0	-	+3000	180	-	RNAV 1

(1) +3000ft ATC discretion

Path Terminator	Waypoint Identifier	Inbound Course °M (°T)	Leg Distance (NM) (1)	Timing(min.)/ Waypoint Distance (NM) (2)	Turn Direction	Minimum Altitude (FT)	Maximum Altitude (FL)	Speed Limit (kt)	Magnetic Variation (°)	Navigation Specification
HM	INLER	356 (359.0)	3.5	1.0/ -	R	+4000	-	190	3	RNAV1

(1) RNAV system with holding functionality

(2) RNAV system without holding functionality